

# Two Party Farm Machinery Auction

Thursday Dec. 4, 2014 @ 10:30 a.m.

Located from Griswold, Iowa - 5 miles north on Hwy. 48 then east 3/4 mile on Nishna Valley Rd or from Lewis, IA - 2 1/2 miles west on Nishna Valley Rd.

## Greg Theede Estate Auction

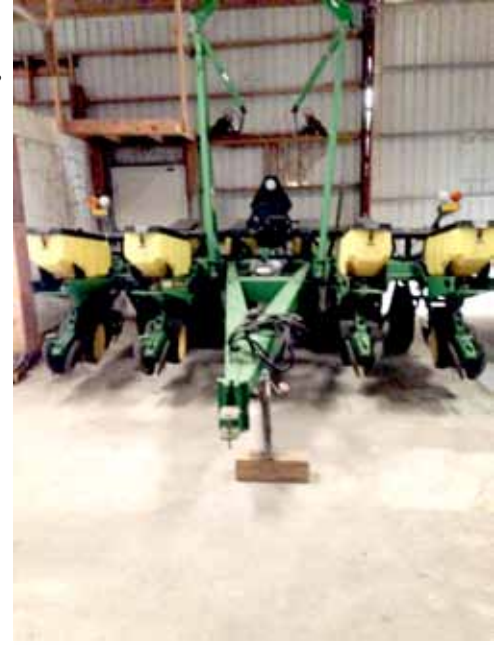
**Jennifer Theede, Executor**

**55464 Nishna Valley Rd. Lewis, IA**

*Due to the death of my husband, I will sell the following farm equipment.*



- JD 4430, D. tractor, C.A.H. SN# 008934R, 4334 hrs. on tach, 18.4 x 38 rubber, 2 hyd. valves, Quad range
- IH 5288, D. tractor, C.A.H., 7324 hrs., 18.4 x 42 rubber w/axle mount dual tires, frt. wt. bracket, very good paint, 3 hyd. valves
- IH 756, D., 18.4 x 34 rubber, wide front, 2 hyd. valves, w/Dual loader QTach, 7 ft. bucket; homemade grapple fork; Westfield MK 80-61 auger, swing hopper, 8", PTO
- JD 7000 planter, 4 row, 38", no till coulters, insect boxes
- MF 88, plow", 4 or 5 bottom
- CIH 1640 combine, SN# 0034764, 2991 hrs., spreader, good rubber, 28L-26, 800 hrs. on new complete enginecombine is in good condition, used this fall on corn
- CIH 1020 platform, 16'
- CIH 1044 corn head, 4 row, 36"
- Kinze 2600 planter, 8 row, 36" split row, no till coulters, trash whips, center pivot
- Kewanee 1010 disc, 20 ft.
- Wil-Rich F.C. hyd. fold
- TA 800 trailer sprayer, hyd. drive pump, hyd. boom, very nice sprayer



Poly tank 1300 gal. w/transfer pump; Rhino TW84 3pt. blade; Rhino 3 pt. mower, single back wheel, 7 ft.; MF 3 pt. back hoe, model 220; Mayrath auger PTO, 60 ft.; IH F.C. 3 pt., 12 ft.; 3 pt. bale carrier; 7 1/2 ft. industrial loader, bucket, never used; H&H car trailer, 16 ft, fenders & tool box; Parker gravity wagon w/bean auger; Parker 4800 gravity wagon w/gear; 3-Parker 2600 gravity wagons, 2/w big tires; Lundell gravity wagon; heavy duty trailer; 500 D barrel w/near new elec. pumps; 2-28L-26 combine tires & rims; 2-LP hanging furnaces; spare wheels & tires for wagons; 2-IH complete snoots; 1-outside snoot; 8-IH frt. wts.; frt. wts. for MF1100 tractor; 50 gal. LP tank; KEW 1502U power washer; Century welder w/long cables; old AIRCO welder; log chains; hitch pins; hyd. hoses; 2-Dayton LP infrared heaters; Sukup aeration fan; T steel post, 5 1/2, 6, 6 1/2 ft.; 1-32" & 1-36" steel doors w/casing & glass in doors; 3-storm alum. doors; deer tree stand. Six big bales of grass & clover hay. Other misc. items.



## Chuck & Doris Rieken Auction

*Due to health reasons, we will sell the following farm equipment.*



- JD 8100 FWA tractor, 1996, 6185 hrs, SN#8100P005386, Blixton II chip, PS, 18.4 x 46 rear rubber & duals, all tires less tan 100 hrs., fronts 420/90 R30, 3 hyd. valves, 8 frt. wts., inside rear wheel wts., front fender
  - JD 7200 Max Emerge 2 Vac meter conservation planter, 8 row, 30", hyd. frt. fold, 3 bu. boxes, elec. row shut-offs, trash whips, coulters, precision corn & bean units, adjustable hitch, new tires.
  - JD 400 hoe, 3 pt., 6 row
  - JD 4 section harrow
  - CIH 496 disc, 25' w/IH harrow, good blades
  - Noble Consertill, 12', pull type
  - Ford 8970 tractor FWA, 7304 hrs., SN# D4079204, 18.4 x 46 rear rubber & duals, good, front 420/90 R30, front fenders, 22 frt. wts., 4 hyd. valves, engine heater
- Tractors are clean, sound and well cared for.**
- IH 4600 F.C., 25' w/IH harrow
  - CIH V-ripper #14, 5 shank w/coulters & trip shanks
  - IH 720 plow, 6 bottom 20", on land hitch
  - IH 120 mower, 7' bar
  - JD L manure spreader
  - JD 127 Gyro mower, pull type, 6'
  - Gravity wagon, 165 bu. w/hyd. seed auger & tarp
  - Kewanee, 3 pt. blade, 8'



Kelly Ryan narrow elevator, PTO; older McCormick grain drill on rubber w/grass seed; light duty wagon gear; homemade heavy duty tandem axle trailer w/fenders, 18'; heavy duty truck bed trailer, 14'; powder river tilt calf chute; 3-18.4 x 38 bias ply tractor tires w/dual rims; JD 290 2 row planter, shedded, good. The above equipment is in good condition.

## Consigned Equipment

- Kuhn GMD 700 GII HD disc mower, 9', less than 150 acres
- IH M tractor, all new rubber, electronic ignition, new wiring, belt pulley, SN#1283170, good tin work, front hitch
- 8-11R 22.5 Goodyear caps, good tread
- 9-wagon wheels w/tires 6 bolt, 12.5 x 15, 7.60 x 15, 9.5 x 14, 11L-15
- Eversman 5 yd. scraper, pull type, front dolly wheel
- 2-500 gal. skid fuel tanks w/elec. pumps
- IH H tractor, rear rubber good FBH11698
- Chemical batcher for tanker truck, gas engine, large hose
- Several large valves and other parts
- Pick up fuel tank, 12v. pump, 100 gal.
- JD 700 soil mover, w/dolly wheels, 4 yd.
- 2-Bush Hog wagons, 8 ft. x 12 ft. w/hoist
- 6 section harrow on cart
- Westendorf JL21 QT loader
- Westfield 10 x 61 auger, hyd. lift & hopper
- 16 large bales of hay



Auctioneers: Chuck Rieken 712-789-0144 Randy Bates 712-789-0601 Steve Bergren 712-789-0847

Clerks: Doris Rieken, Lela Carlson and Nancy Freeman

Not responsible in case of accident. No property removed until settled for.

All announcements day of sale take precedence over sale bill. Port-a-pots and lunch on grounds.

<[www.bergrenrealestateandauktion.com](http://www.bergrenrealestateandauktion.com)>